



KARCHER  
  
DESIGN

SQUARED PERFECTION





## SQUARED PERFECTION

Four equal sides and four equal angles, the geometry of the square shows a clear style. Straight lines and angular shapes are an expression of modern Architecture. This continues in the square roses and rectilinear forms of KARCHER DESIGN door handles, knobs and window handles. Thus, even at the door, the idea of Architects of the design with straight-line elements is realized. KARCHER DESIGN offers an assortment of handles to fulfil this requirement of clean lines and angular shapes. This allows making rooms perfect.

KARCHER  
  
DESIGN





ER45Q



ER31Q



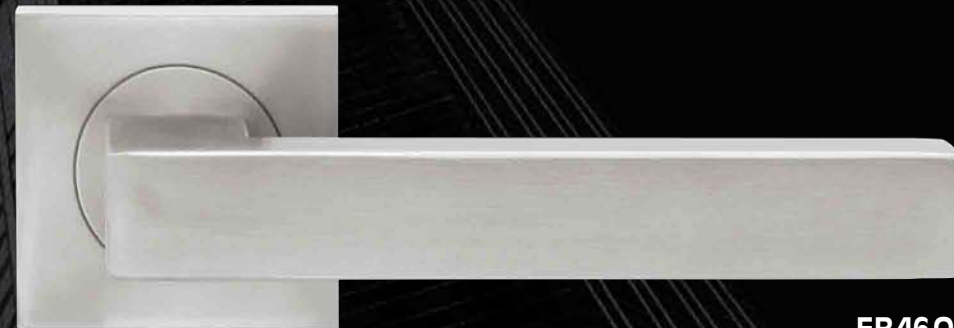
ER28Q



ER37Q



ER47Q



ER46Q



ER65Q



ER48Q



ER48Q



ER34Q



ER43Q



ER37Q





ELQ 46



RLE 48



ECS110Q OS



ECS110Q PZ



ECB401Q



EF454Q



EF464Q



EF474Q



EF284Q



EF314Q

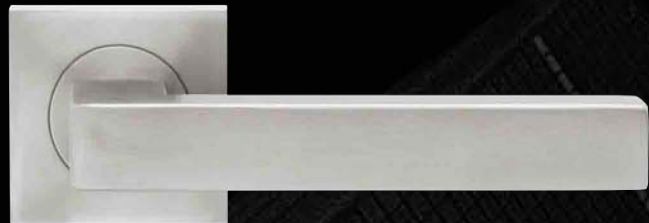


EF484Q





ELQ 46



ER 46 Q



EF 464 Q

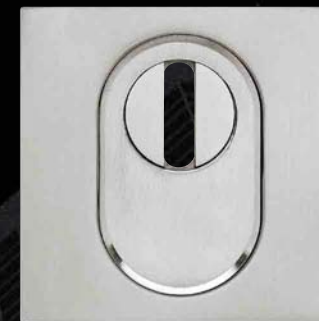
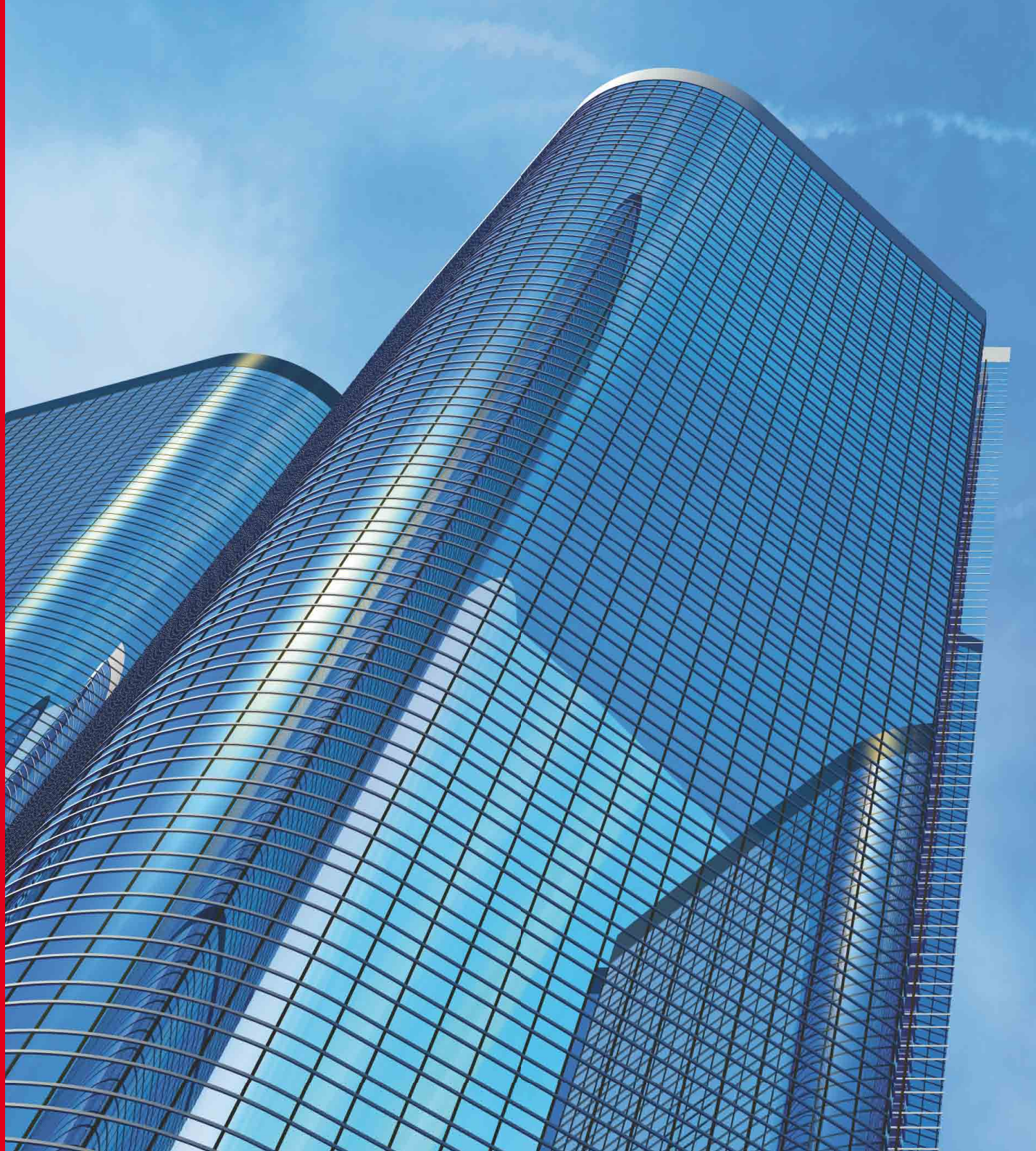


EK 550 GQ

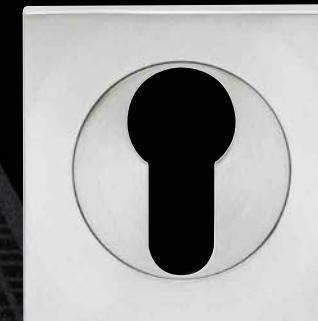


ES 46





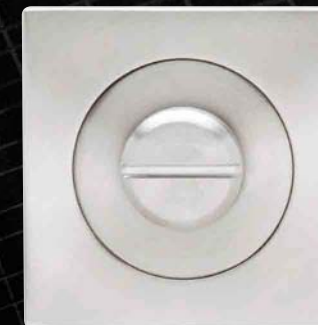
ESR 400 Q KS



ESR 340 Q PZ



EZ1340 BAD



EZ1340 BAD

Stainless steel is a modern material whose qualities allow it to be used in a wide variety of areas. KARCHER DESIGN stainless steel products are manufactured from a high corrosion resistant chromium-nickel steel (304) combination. This first rate material is resistant to corrosion and environmental substances. All our stainless steel products are suitable for door and window furniture in both internal and external applications. The surface finish is highly resistant and easy to care for KARCHER DESIGN products are recommended for all doors locations in both residential and commercial buildings.



## pocket door set EPD Q



onesided locking



without lock



**KARCHER**  
  
**DESIGN**

Karcher GmbH  
Raiffeisenstraße 32  
74906 Bad Rappenau  
Germany  
Tel.: +49 7264 9164-52  
Fax: +49 7264 9164-40  
mail@karcher-design.com  
www.karcher-design.com